


OCULUS - PENTACAM Topometric / KC Staging

120b86


Last Name: 5 Demo Screening
 First Name: Assymmetric Cornea
 ID: Keratoconus OD
 Date of Birth: 05.01.1948 Eye: Left
 Exam Date: 20.01.2004 Time: 07:45:29
 Exam Info:

Cornea Front



Rf: 7.33 mm K1: 46.0 D
 Rs: 6.95 mm K2: 48.5 D
 Rm: 7.14 mm Km: 47.2 D
 Axis: 83.3° Astig: 2.5 D
 Q-val (8mm): -0.29 Rper: 7.40 mm Rmi: 6.84 mm

Cornea Back



Rf: 6.26 mm K1: -6.4 D
 Rs: 5.63 mm K2: -7.1 D
 Rm: 5.94 mm Km: -6.7 D
 Axis: 82.4° Astig: 0.7 D
 Q-val (8mm): -0.21 Rper: 6.14 mm Rmi: 5.25 mm

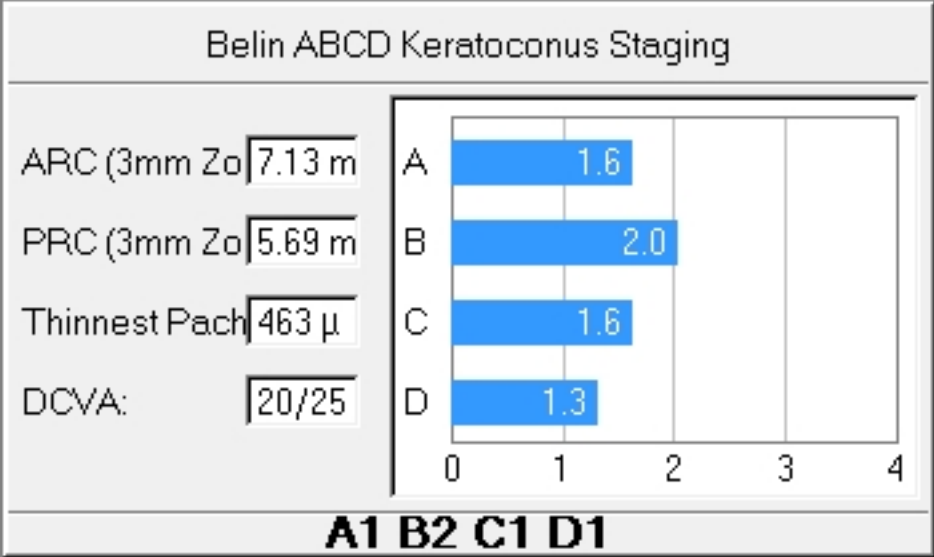
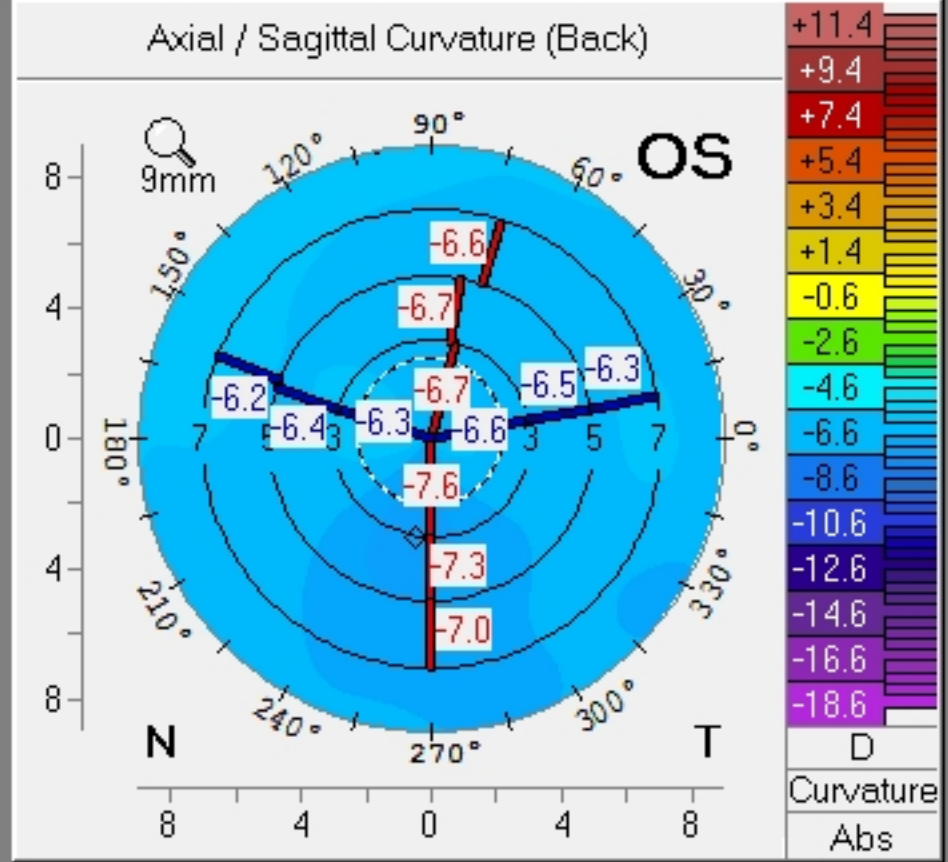
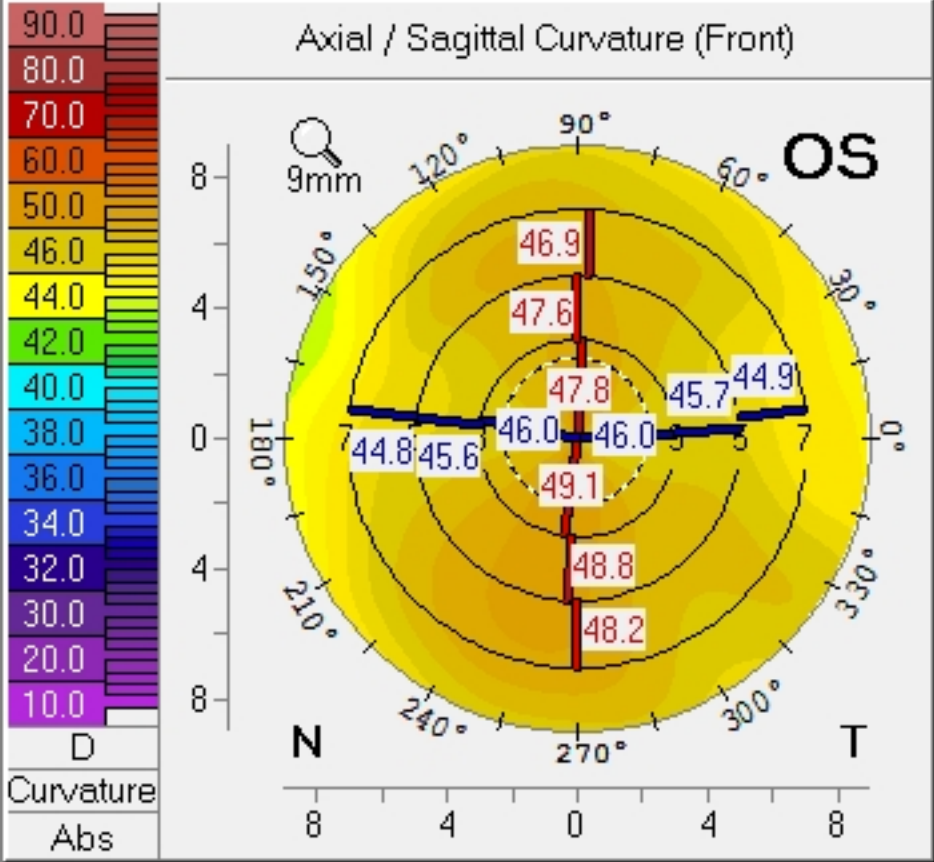
True Net Power



Astia: 2.1 D K1: 44.9 D
 Axis: 83.6° K2: 47.0 D
 P.Max: 47.8 D Km: 45.9 D

Pachy:	x[mm]	y[mm]
Pupil Center: +	475 μm	-0.03 +0.10
Pachy Apex: ·	473 μm	0.00 0.00
Thinnest Locat: ⊙	463 μm	+0.65 -0.78
K Max. (Front): ◆	49.3 D	-0.07 -0.59

Cornea Volume:	56.7 mm ³	KPD:	+1.1 D
Chamber Volume:	126 mm ³	Angle:	36.7°
A. C. Depth (Ext.):	3.06 mm	Pupil Dia:	2.25 mm
IOP(Sum):	+3.1 mm	Lens Th:	



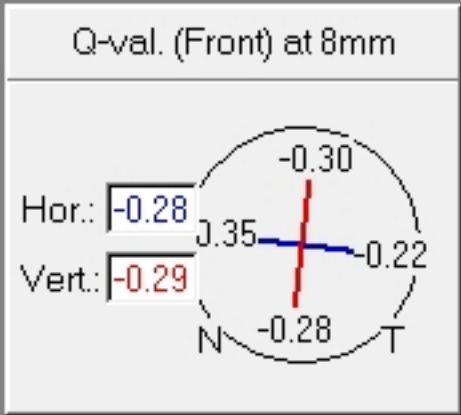
Asphericity (Front) of Major Meridians

(Q-val.)	Peripheral mm-Rings (Dia)				
	6mm	7mm	8mm	9mm	10mm
Nas	-0.28	-0.31	-0.35	-0.40	-0.53
Temp	-0.23	-0.23	-0.22	-0.20	-0.20
Inf	-0.15	-0.21	-0.28	-0.37	-0.53
Sup	-0.23	-0.25	-0.30	-0.37	-0.55
Mean	-0.22	-0.25	-0.29	-0.34	-0.45

Front: Asphericit Axial/Sag
 Back: Asphericit Axial/Sag

Indices (in 8mm zone)

ISV:	24	IHA:	9.4
IVA:	0.13	IHD:	0.018
KI:	1.03	RMI:	6.84
CKI:	1.01	TKC:	-



Spot locations in 8mm zone (polar coordinates)

Pupil Center: +	0.11mm (105.4°)
Thinnest Locat: ⊙	1.02mm (309.8°)
K Max. (Front): ◆	0.59mm (263.7°)

